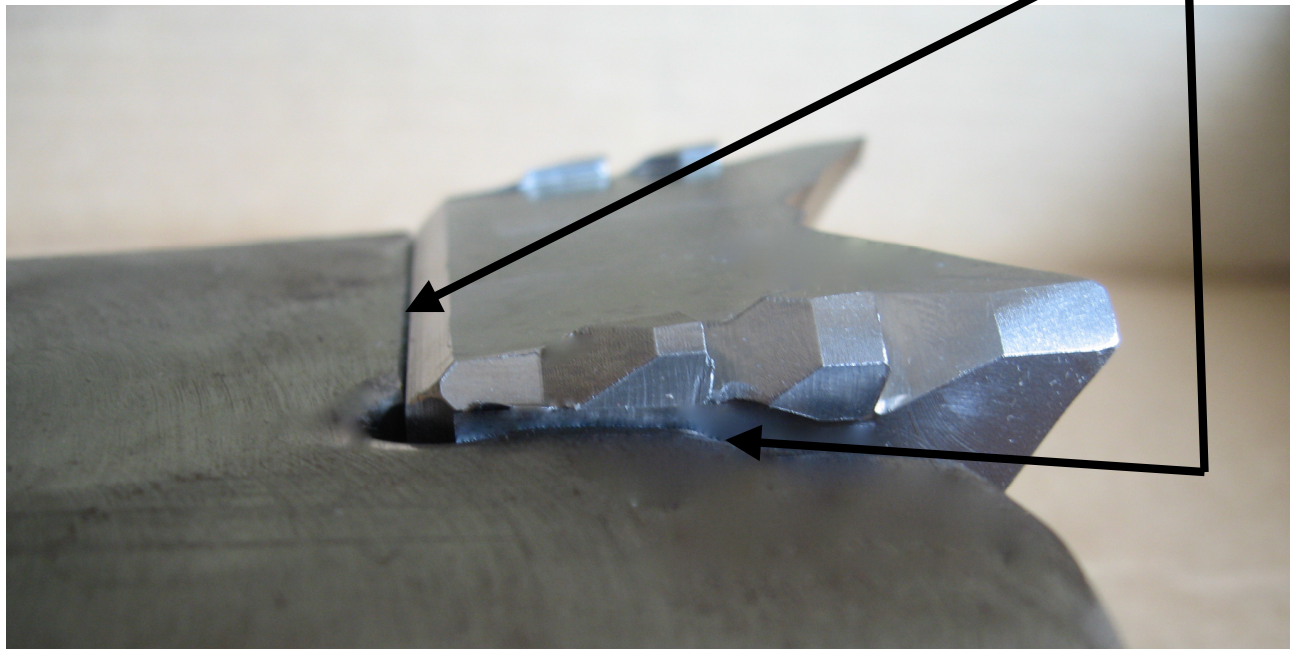


Gator Teeth[®] part no. G24K,GC24K & XC24K Installation Instructions

GATOR TEETH[®] part number G24K ,GC24K & XC24K ARE DESIGNED TO FIT ONLY ON WARATAH, JOHN DEERE, TIMBERJACK & TIGERCAT SERIES 14 SAW BLADES.

NEW BOLTS MUST BE INSTALLED WHEN REPLACING SAW TEETH – USE GRADE 8 HEX HEAD BOLTS 5/8" – 18 NF x LENGTH RECOMMENDED BY THE DISC MANUFACTURER.

1. ENSURE THAT ALL MATING SURFACES ARE CLEAN & FREE FROM BURRS.
2. USE AN ANTI-SEIZE COMPOUND ON THE THREADS
3. TORQUE TO 160 FT.LB.
4. ENSURE THAT THERE IS NO GAP BETWEEN THE GATOR TOOTH & THE DISC HERE & HERE



DO NOT USE GATOR TEETH IF THERE IS A GAP AS THIS INDICATES A WORN DISC AND IMPROPER INSTALLATION

For more information contact Timberblade Inc.
By phone at 519-532-3283
By fax at 1-888-763-2336
By email maurice@timberblade.com
www.timberblade.com