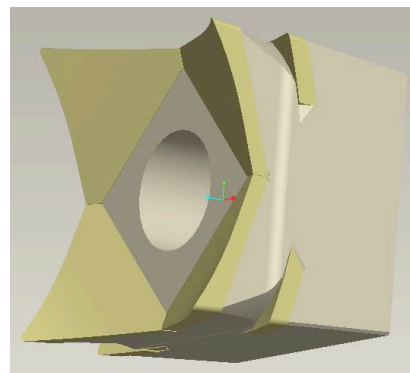
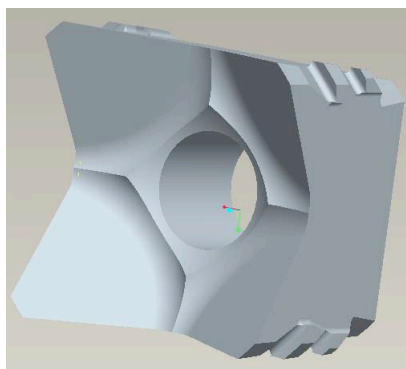


Timberblade



Gator Teeth[®] X25NS, XC25NS, G23NS & GC23NS - Installation Instructions

GATOR TEETH[®] part number X25NS, G23NS & GC23NS ARE DESIGNED TO FIT ONLY ON TIGERCAT SERIES 74 SAW BLADES.

NEW BOLTS MUST BE INSTALLED WHEN REPLACING SAW TEETH

For **STEEL TEETH** – USE GRADE 8 HEX HEAD BOLTS 1" – 14 NF x 4 1/2" .

For **CARBIDE TEETH** – USE GRADE 8 HEX HEAD BOLTS 1" – 14 NF x 4 3/4" (1/4" LONGER).

1. ENSURE THAT ALL MATING SURFACES ARE CLEAN & FREE FROM BURRS.
2. USE AN ANTI-SEIZE COMPOUND ON THE THREADS
3. ENSURE THAT TOOTH FITS SNUG AGAINST ALL MATING SURFACES. IF TOOTH FITS LOOSE IT MAY BE DUE TO BENT BOLT OR A WORN DISC. CORRECT BEFORE PROCEEDING.
4. TORQUE TO 300 FT.LB.

For more information contact Timberblade Inc.

By phone at 519-532-3283

By fax at 1-888-763-2336

By email maurice@timberblade.com

www.timberblade.com